

UPCOMING SHOW

Up to 15 works

Feb. 26-March 23, 2013

George Billis Gallery

521 W. 26th Street

New York, NY 10001

(212) 645-2621

• SHOW LOCATION NEW YORK, NY



PAUL SCHULENBURG

Observational narratives

For the first time in his long painting career, Paul Schulenburg has shifted his focus from Cape Cod and coastal New England to New York City. His new exhibition, to be held at the George Billis Gallery in Chelsea, will include works inspired by SoHo, Greenwich Village and various neighborhoods in Brooklyn.

"It was a bit of a culture shock to be in the noise and visual cacophony of the city, but I have enjoyed the change of pace and the new sights," says Schulenburg.

Schulenburg lives and works not far from Edward Hopper's home in Truro on Cape Cod and his work and the same Cape Cod landscape have always been an inspiration for Schulenburg. With this latest trip to New York City, Schulenburg has followed Hopper's lead once again by being stirred by the legendary artist's paintings of the city.

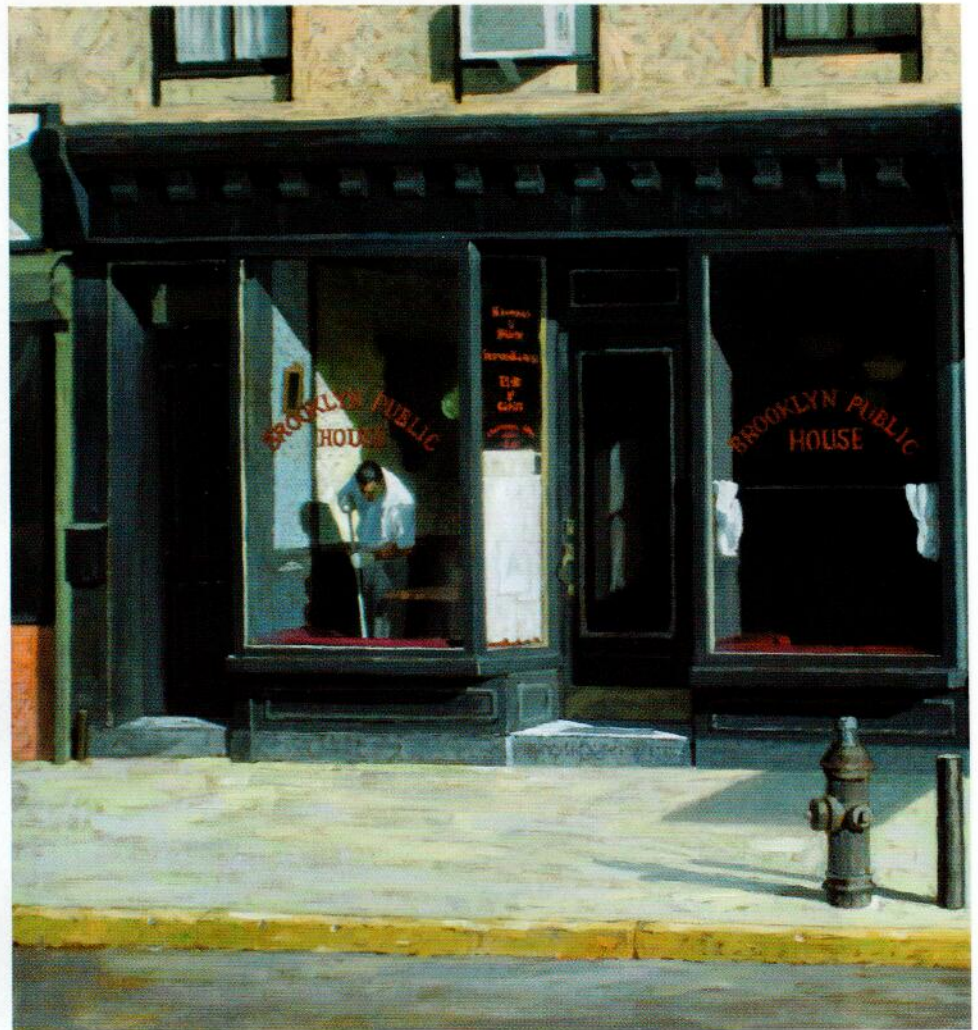
"I titled one piece *Early Monday Morning* as an homage to one of Hopper's iconic paintings, *Early Sunday Morning*," says Schulenburg. "It was an early morning in Brooklyn when I noticed this scene at a local pub, like a Hopper painting come to life. I knew in an instant I would have to try and capture the moment if I could. The location is limited in color range but that draws attention to the red lettering on the windows and the cushions of the window seats."

For Schulenburg, though, the most dramatic aspect of the painting comes from the light.

"You see it coming in the window and creating a diagonal shape, illuminating the man at work and the way his white shirt is so white, which echoes the white of the curtains," describes Schulenburg. "These paintings have a stillness and quiet feeling to them, which is the opposite of the feeling you get most of the time in the city."

And, unlike many painters of New York City, Schulenburg has stayed away from the usual monuments and historic buildings in order to show a different aspect of the city.

"The places I chose to be my subjects



EARLY MONDAY MORNING, OIL ON CANVAS, 36 x 36"

were not necessarily places people would know and recognize, although many people from the city may have the feeling they are familiar with them," says Schulenburg. "I am mostly concerned with composition, color and light." •

For a direct link to the exhibiting gallery go to

www.americanartcollector.com

Price Range Indicator

Our at-a-glance Price Range Indicator shows what you can expect to pay for this artist's work.

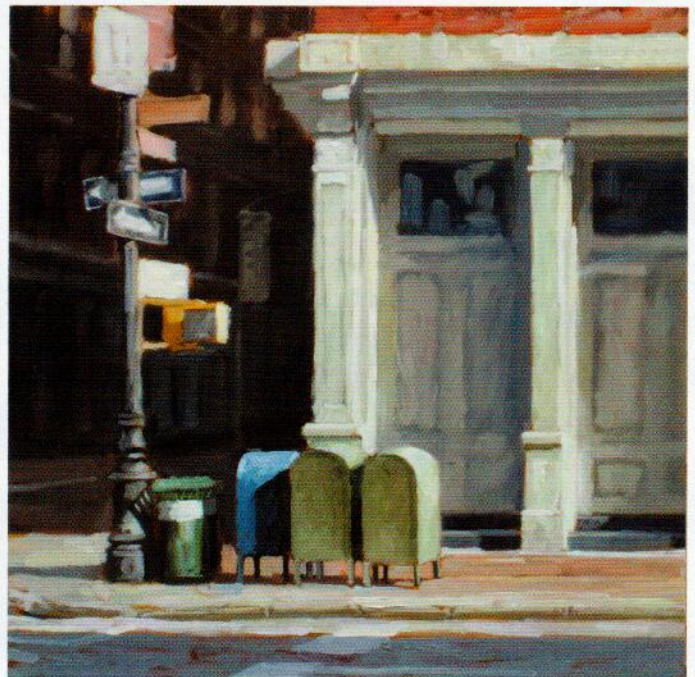
	Small	Medium	Large
2003	\$500	\$1,800	\$4,000
2007	\$1,000	\$3,600	\$10,000
2013	\$1,200	\$4,800	\$12,000



TEA & SYMPATHY, OIL ON CANVAS, 18 X 24"



URBAN TRANSPORT, OIL ON CANVAS, 36 X 36"



MAIL BOXES, OIL ON PANEL, 12 X 12"