

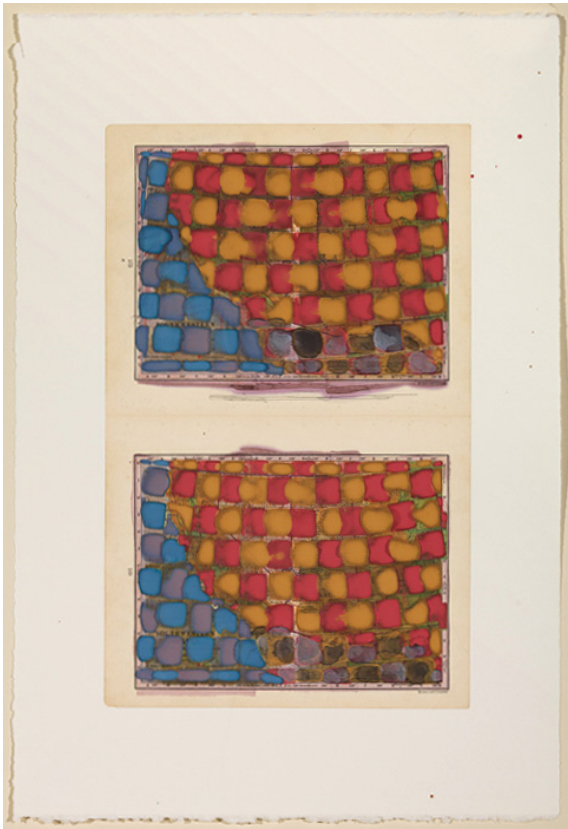
GEORGE BILLIS GALLERY

Dan Mills

October-28th-November 28, 2014

Phone: 212.645.2621

For Release: Immediately



Bleed (172 169), 2011, watercolor and ink on printed maps on paper, 22 1/2 x 15 inches

George Billis Gallery is pleased to welcome Dan Mills and his work to the New York location. The exhibition will run from October 28th through November 28, 2014. The opening reception will be held at the gallery located at 525 West 26th Street between 10th and 11th avenues on Thursday, October 30th, from 6-8 pm.

Dan Mills' work is a direct reflection of what interests him. Currently, his work has included cartography and abstract ways of codifying information while including history, humour, political and cartoon portraits, and abstraction. Mills uses maps and transforms them to create something new. The abstractions and colors are eye-catching, and they remind the viewer of the deception of mapping systems.

He has had numerous solo exhibitions spanning across the world from Manhattan to Chicago, Los Angeles and Tianjin, China. He is currently the director of the Bates College Museum of Art and is the lecturer in the humanities in Lewiston Maine since 2010. An Artist who is a museum director / curator, Mills has lead dynamic college art museums and their programs in order to bring a world of ideas to their campus and communities. His projects have traveled to nearly three dozen institutions throughout the US and in China. Also, Mills is a frequent lecturer, curator, guest critic, juror and officer of the Association of Academic Museums and Galleries (AAMG).

Mills is the son of E.Andrew and Virginia Ward Mills, both painters from Upstate New York. He recieved a BFA from Northern Illinois University in 1981. He and his wife, artist Gail Skudera, lived and worked in Chicago where they both exhibited their works and actively lived in the art community. Now they work and reside in Maine.

The George Billis Gallery marks its 18th year in the Chelsea Art District and its sister gallery is located in the burgeoning gallery district of Culver City in Los Angeles. For more information, please contact the gallery via e-mail at galler@georgebillis.com or visit our website at georgebillis.com

GEORGE BILLIS GALLERY

521 WEST 26TH STREET, B1

NEW YORK, NY 10001

PHN: 212.645.2621

EMAIL: [GALLERY@GEORGEBILLIS.COM](mailto:galler@georgebillis.com)

WWW.GEORGEBILLIS.COM



Rivoj, Lagoj, kaj Montoj, 2013-14, acrylic on printed map on paper. 22 1/2 x 30" (detail)