

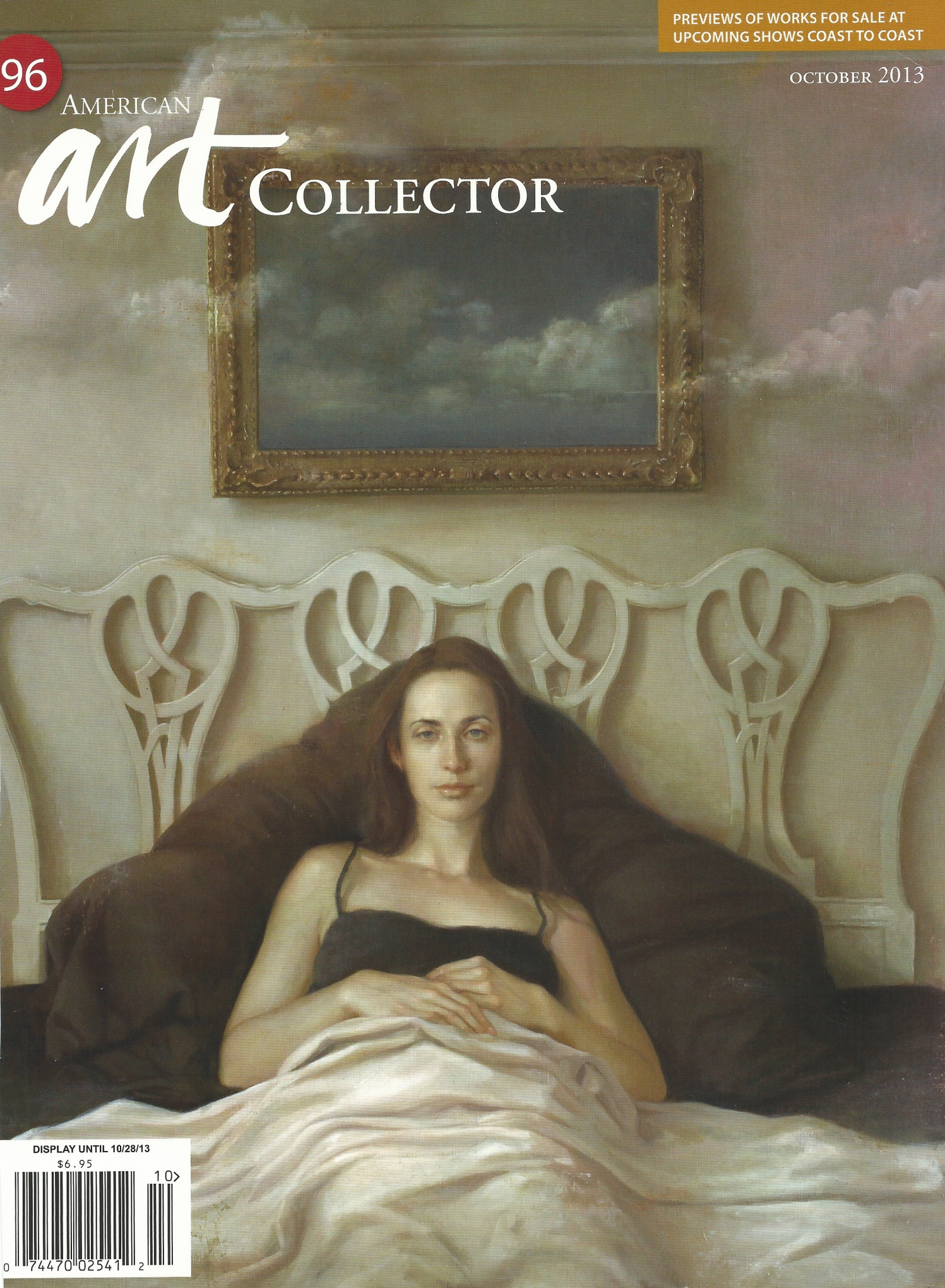
PREVIEWS OF WORKS FOR SALE AT
UPCOMING SHOWS COAST TO COAST

OCTOBER 2013

96

AMERICAN

art COLLECTOR



DISPLAY UNTIL 10/28/13

\$6.95

10>



0 74470 02541 2

UPCOMING SHOW

Up to 20 works

Oct. 22–Nov. 16, 2013

George Billis Gallery

521 W. 26th Street, B1

New York, NY 10001

(212) 645-2621

SHOW LOCATION NEW YORK, NY



ELIZABETH O'REILLY

Shapes of place

For her ninth exhibition at George Billis Gallery in New York, Irish-born artist Elizabeth O'Reilly departs from her paintings of the Gowanus Canal area of Brooklyn to pursue new subject matter inspired by the colonial village of St. Mary's City in Maryland, the Sebasco Estates in Maine, and her native Ireland.

"I hope collectors will be as excited about this new subject matter as I am. These paintings...encapsulate a lot of what excites me about painting in general. I hope they will go away saying 'wow,' which is how I felt when I painted them. That is the goal, I guess, for a communion between painter and viewer," she remarks.

While doing a residency at St. Mary's College in Maryland last spring, O'Reilly found the colonial village at St. Mary's City inspiring to paint. "I knew the minute I saw the buildings that I could probably paint there forever. It was really very exciting for me," she recalls.

Attracted to the shapes of the man-made houses and the starkness of the almost-black buildings, she was consumed with plein air painting at fever pitch. For O'Reilly, each painting is about the geometry of particular houses and the arrangement of colors and shapes rather than an exact replication of what she sees.

"I look for simplicity and clarity always, and a real feeling for color that is my own, but with a freshness of paint handling that conveys the energy of the on-site painting experience," says O'Reilly. "I think this body of work continues in this vein and I feel very excited to show it."

Sometimes O'Reilly paints pure landscapes, but more often she's attracted to a marriage of nature and industry as illustrated in *Blair Pond with Pump*. The artist has visited this site numerous times over the past 20 years but it didn't catch her eye until after Hurricane Sandy had demolished a walkway across the bridge and the town installed the green pipes.




Lilies at Green House, oil on panel, 15 x 15½"

"I like the color of industry in *Blair Pond with Pump*, it's sort of a modern landscape, it's very contemporary and of this time," says O'Reilly, "and the unexpected bright green was really fun to work with against the color of nature."

Another oil piece, *White Boat, White House*, was inspired during a teaching assignment at Rock Gardens Inn on the Sebasco Estates near Bath, Maine, last fall. "It's about the geometry of particular houses

and the arrangement of shapes," she notes. "It was fun and a challenge to convey such a thing without outlining the shape of the boat, so that the viewer has to figure out what exactly is happening in the painting."

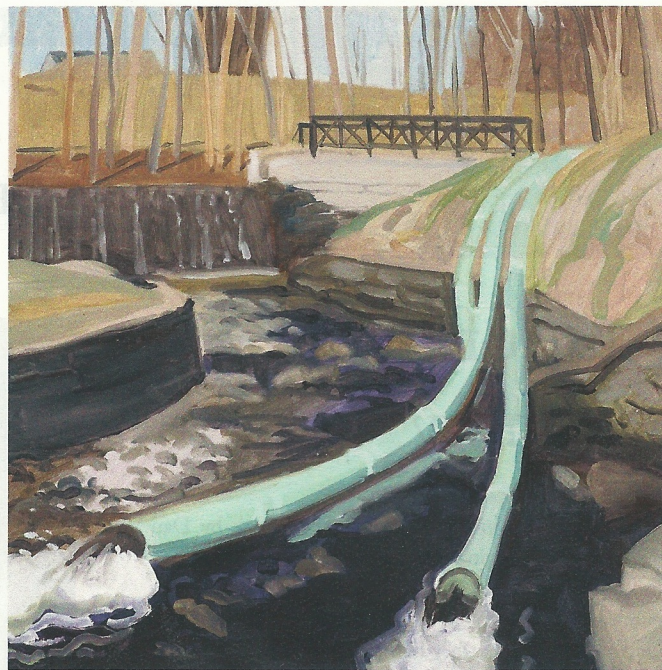
George Billis Gallery will host a reception for the artist on Thursday, October 24, 6 to 8 p.m. ●

For a direct link to the exhibiting gallery go to 

www.AmericanArtCollector.com



White Boat, White House, oil on panel, 15 x 15"

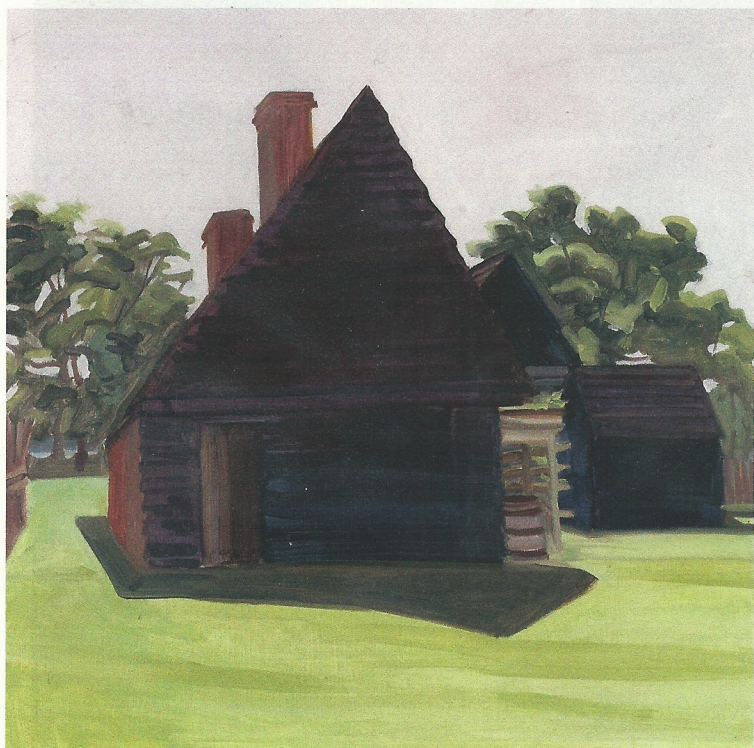


Blair Pond with Pump, oil on panel, 16 x 16"

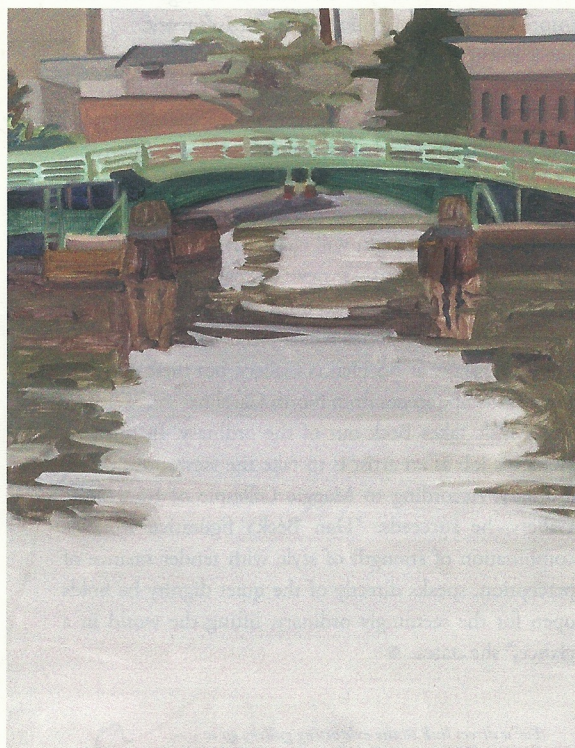
The Gallery Says...

"Simultaneously evocative and still, these paintings fluidly capture the energy of the on-site painting experience and Elizabeth O'Reilly's attraction to geometric forms."

— George Billis, Owner, George Billis Gallery



Double Black House, oil on panel, 11 x 19"



Silver Light, Union St. Bridge, oil on panel, 15½ x 12"